

CRAWLER CRANE QUY260



ZOOMLION

Zoomlion Heavy Industry Science & Technology Co.,Ltd.

Add: Zoomlion Overseas Building, No.613, 3rd Section, Furong Middle Road, Yuhua District, Changsha, Hunan, P.R.China 410205

Copyright © 2016 Zoomlion. All rights reserved. Reproduction and copying of any part of the contents is not allowed for any purposes without Zoomlion's written approval.
Note: No product coating appearance shall be subject to sample.



ZOOMLION

Printed in China VIN-EN-MIC-201604-01

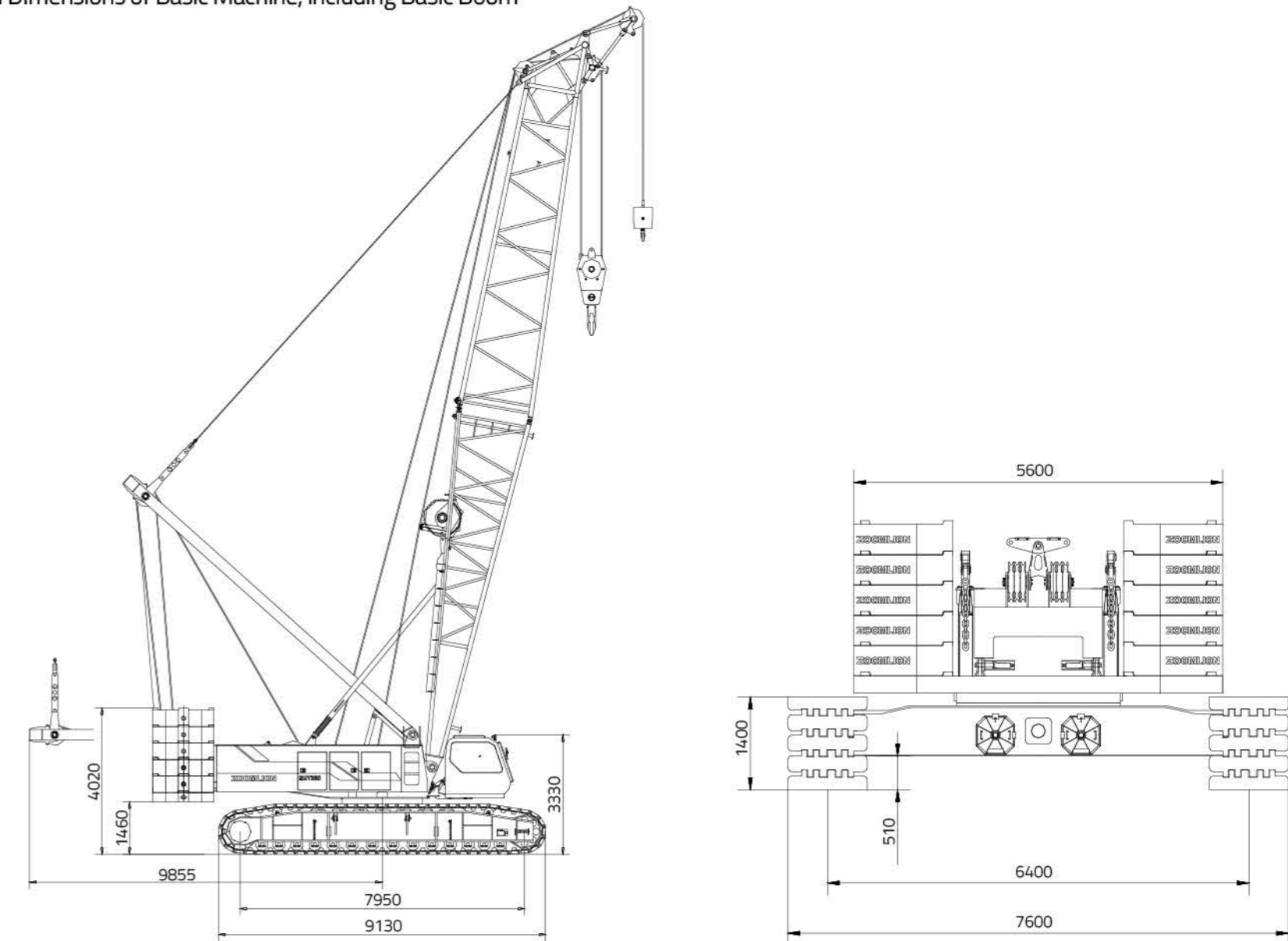
en.zoomlion.com

Main Performance Parameters

Items	Unit of measurement	Values	Remarks	
Maximum lifting capacity × radius	t × m	260 × 5		
Deadweight of crane with basic boom	t	210		
Length of main boom	m	20 ~ 83		
Length of light duty boom	m	86 ~ 95		
Length of fixed jib	m	12 ~ 30		
Maximum lifting capacity with fixed jib	t	34		
Fixed jib angle	°	10, 30		
Maximum length of main boom + fixed jib	m	77 + 30		
Length of luffing jib	m	21 ~ 60		
Maximum lifting capacity with luffing jib	t	73.5		
Working angle of main boom in crane operation with luffing jib	°	65, 75, 85		
Maximum length of main boom + luffing jib	m	62 + 60		
Single rope speed of winches	Main hoisting winch (hoisting winch1)	m/min	110	Sixth layer of drum
	Auxiliary hoisting winch (hoisting winch2)	m/min	110	Sixth layer of drum
	Main boom derricking winch	m/min	29 × 2	Fifth layer of drum
	Luffing jib derricking winch	m/min	46	Sixth layer of drum (optional)
Slewing speed	rpm	0 ~ 1.2		
Traveling speed	km/h	0 ~ 1.0		
Gradeability	%	30		
Ground pressure	MPa	0.115		
Overall dimensions L × W × H	mm	10.9 × 7.6 × 3.3	Without A-frame and boom frame	
Engine	Manufacturer		Cummins (USA)	
	Rated power/rotational speed	kW/rpm	227/2000	
	Maximum output torque/rotational speed	Nm/rpm	1505/1400	
	Exhaust emission standard		U.S. EPA Tier 3 and EU Stage III A	
Distance between track centers × crawler contact length × crawler shoe width	mm	6400 × 8000 × 1200		

Overall Dimensions and Main Parameters

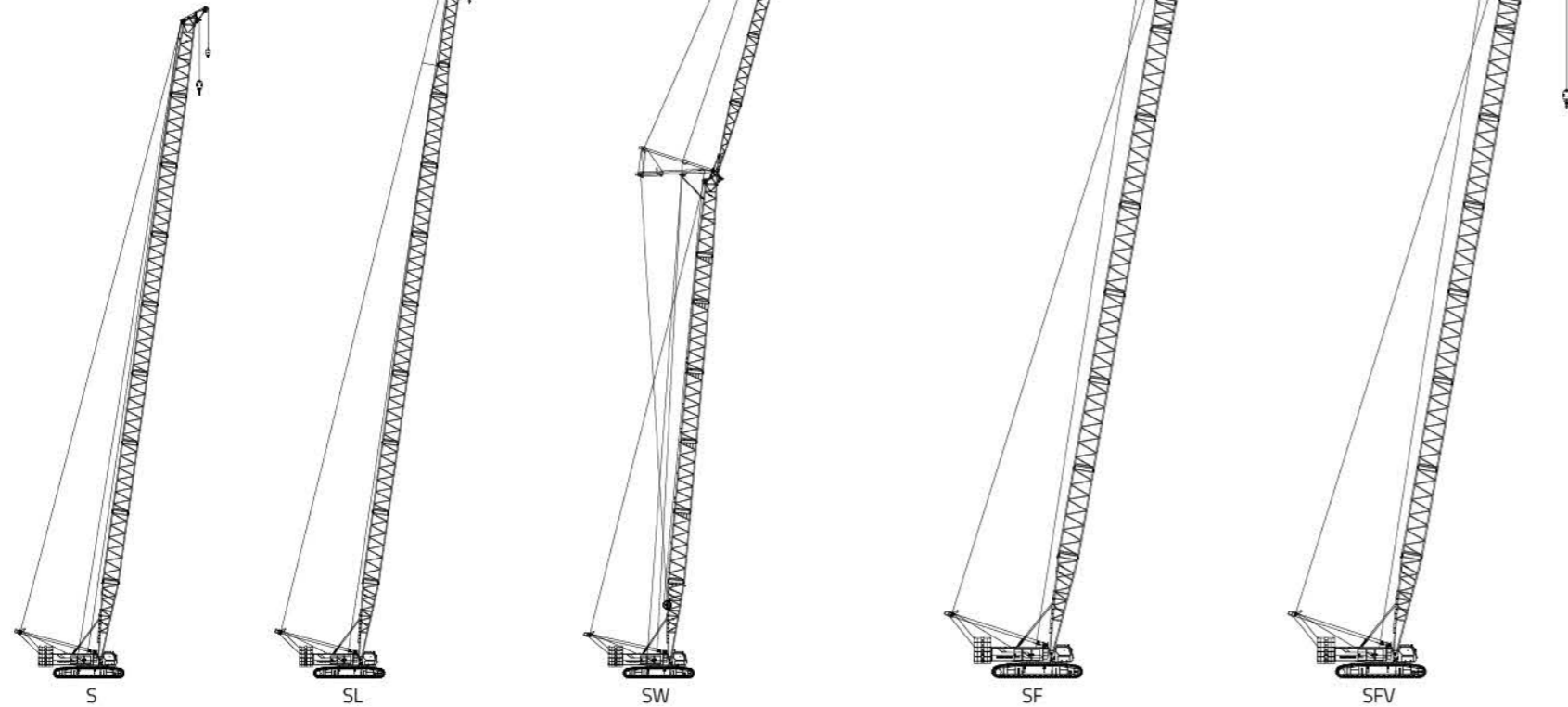
Overall Dimensions of Basic Machine, including Basic Boom



Description of Boom Assembly

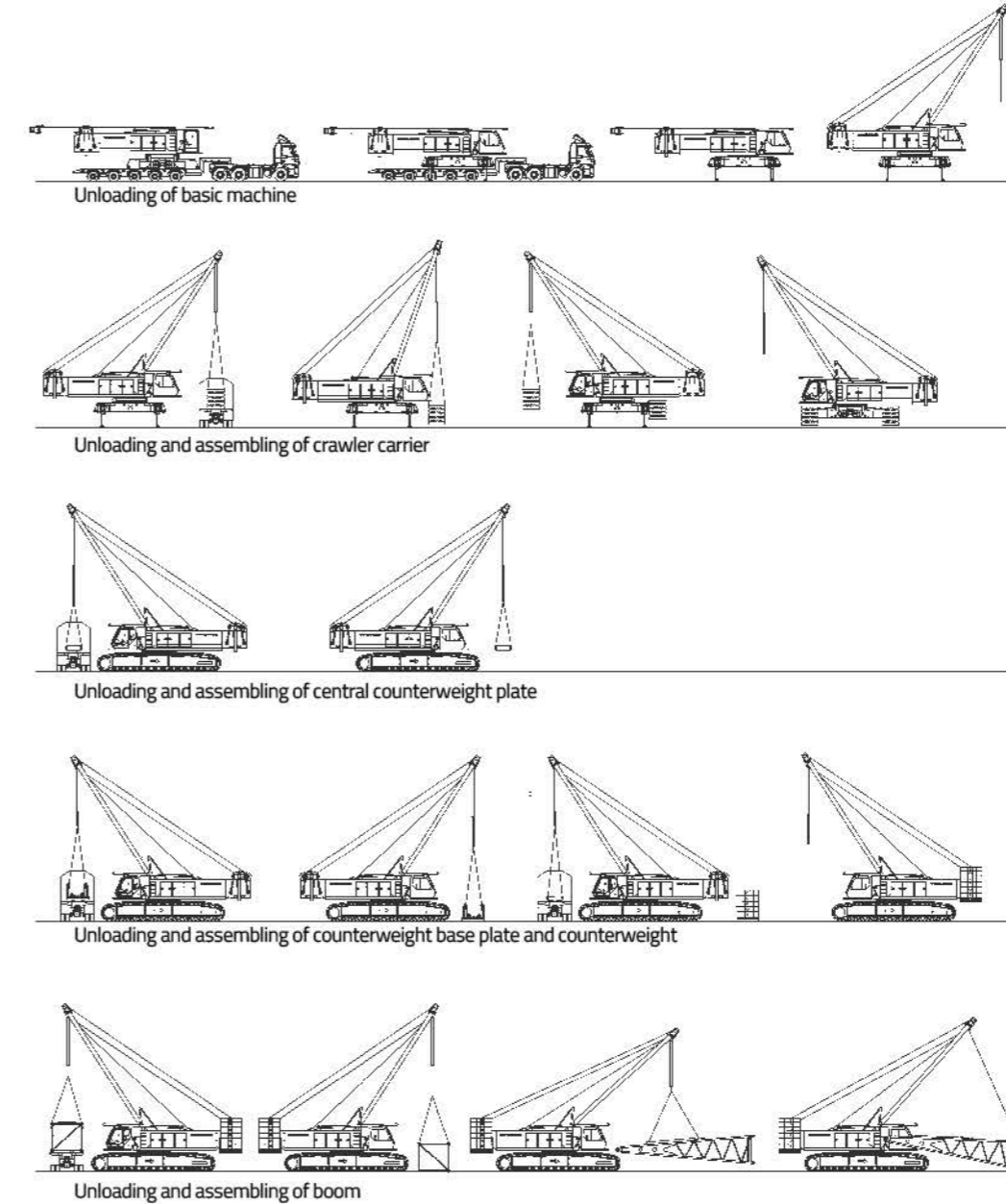
Descriptions of Boom Assembly Codes		
Code	Type	Operation mode parameters
S	Heavy duty boom	20~83m
SL	Light duty boom	86~95m
SW	Luffing jib	Main boom: 23~62m Jib: 21~60m

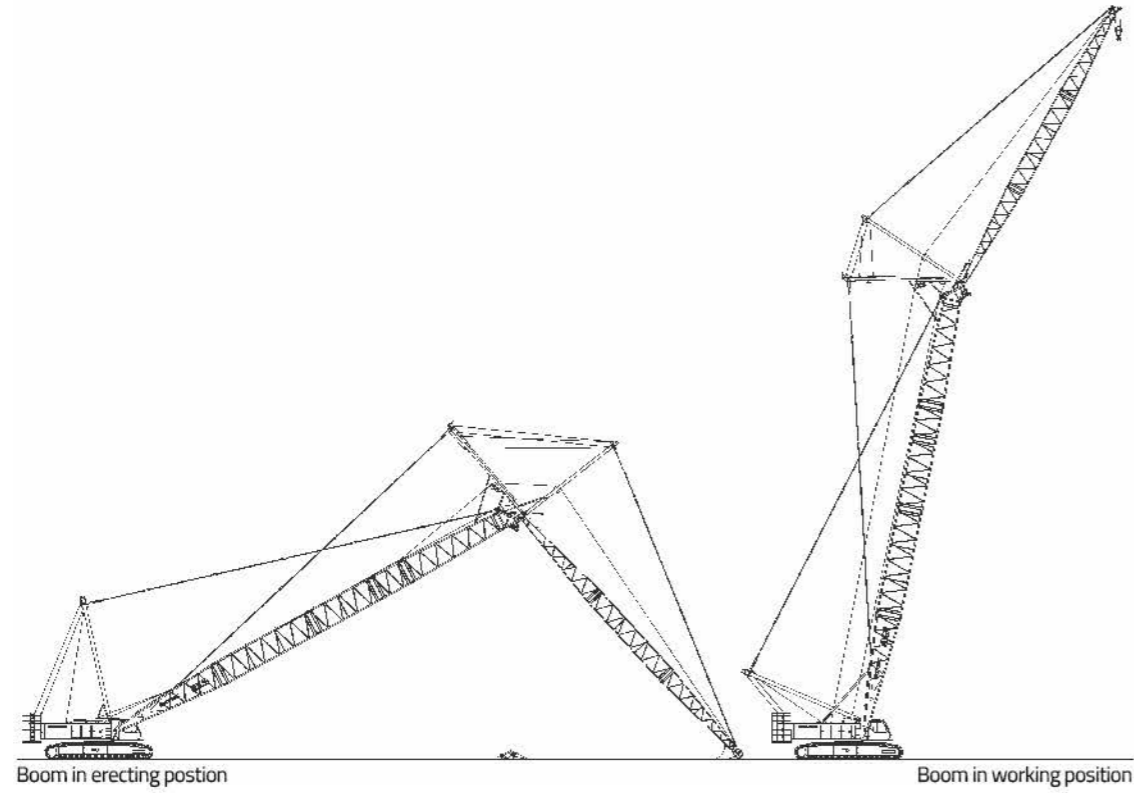
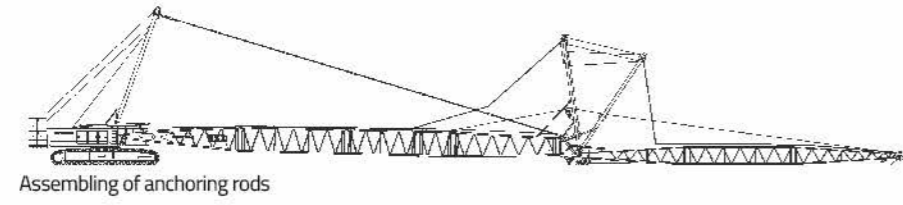
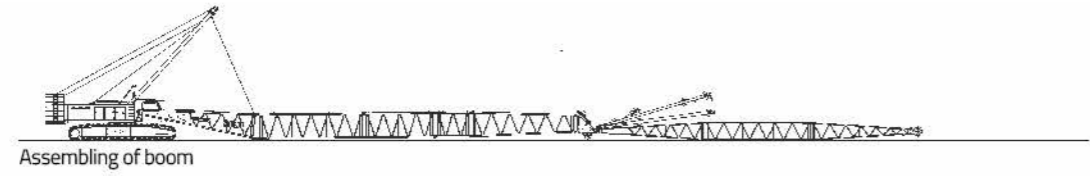
Descriptions of Boom Assembly Codes		
Code	Type	Operation mode parameters
SF	Fixed jib	Main boom: 29~77m Jib: 12~30m
SFV	Heavy fixed jib	Main boom: 41~77m Jib: 6m



Self-Assembly and Dismantling Functions

(Taking the self-assembly process of the crane operation with luffing jib as an example)





Lifting Performance

Lifting Characteristics of Main Boom (S Boom)

Main Boom Lifting Height Characteristics Curve

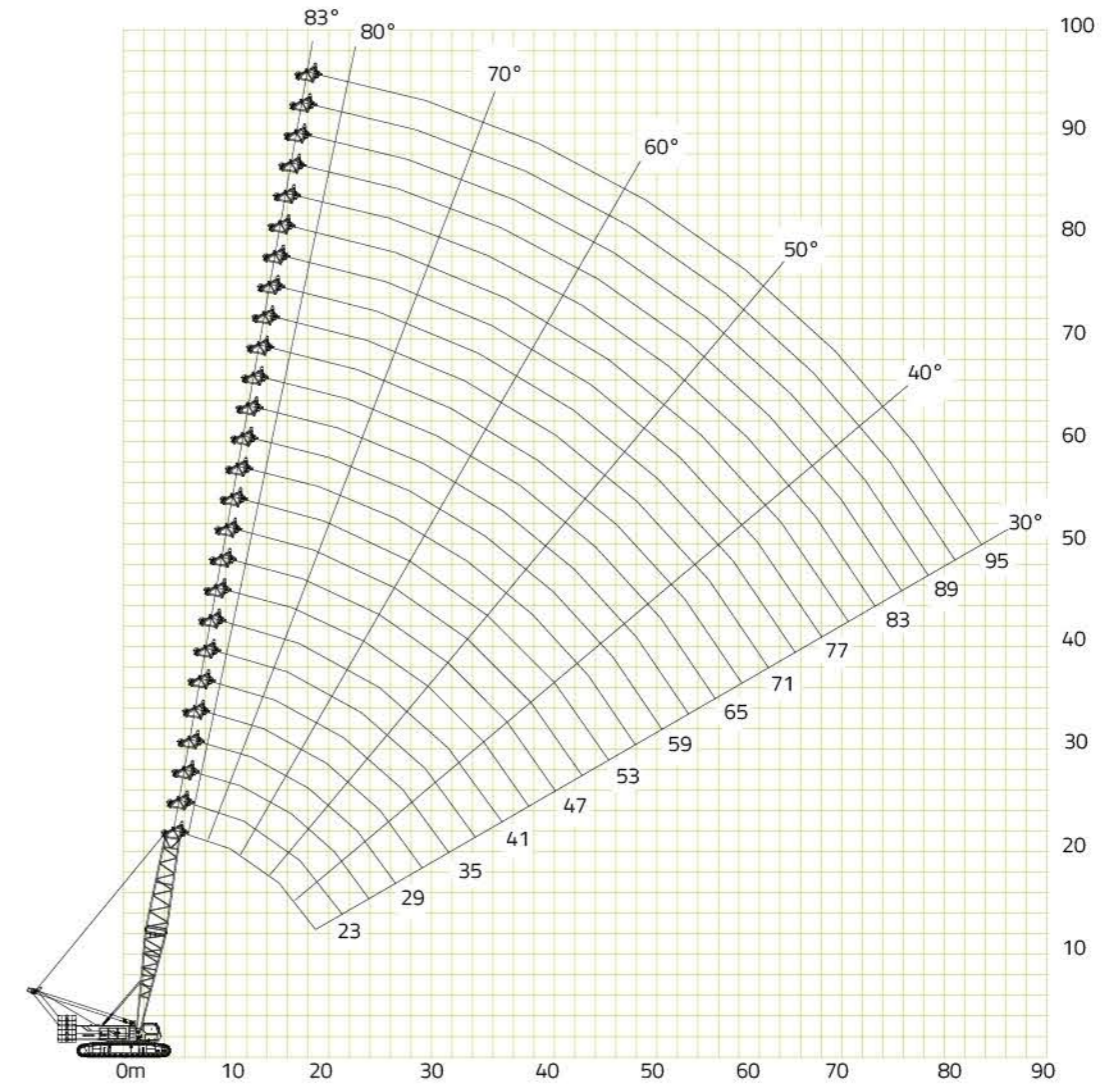


Table of Main Boom Lifting Performance (I) (S Boom)

Unit of measurement: t

Radius (m)	Boom length (m)												
	20	23	26	29	32	35	38	41	44	47	50		
5	260												
6	227	200.8	193.1	184									
7	190.7	190.5	189	174	163	161							
8	175	166.6	164.5	162.5	158.4	149	149	135	118				
9	134.6	134.6	134.6	134.6	134.6	134.6	134.1	124	112	112			
10	132	130	128	125.9	123.9	121.9	121.9	119.8	110	110	102		
12	102.9	103	103.1	103.1	103	101.6	99.5	97.5	97.5	95.5	93.4		
14	83	83	83.1	83.1	83	83	82.8	82.7	81.3	81.3	79.2		
16	69.1	69.3	69.3	69.3	69.3	69.1	69	68.9	68.9	68.7	68.6		
18	59.1	59.2	59.2	59.2	59.2	59.1	59	58.8	58.7	58.6	58.5		
20		51.5	51.6	51.6	51.5	51.5	51.4	51.2	51.1	51	50.8		
22			45.6	45.6	45.5	45.5	45.4	45.3	45.1	45	44.8		
24			40.7	40.7	40.7	40.6	40.4	40.3	40.2	40.1	39.9		
26				36.6	36.6	36.6	36.5	36.4	36.2	36.1	35.9		
28					33.2	33.2	33.1	32.9	32.8	32.7	32.6		
30						30.3	30.3	30.2	30	29.9	29.6		
32							27.9	27.7	27.6	27.5	27.2		
34								25.6	25.5	25.3	24.9		
36									23.5	23.4	23	22.8	
38										21.7	21.4	21.1	
40											20	19.8	19.4
42												18.3	18
44													16.7

Table of Main Boom Lifting Performance (II) (S Boom)

Unit of measurement: t

Radius (m)	Boom length (m)												
	53	56	59	62	65	68	71	74	77	80	83		
10	98	86											
12	93.4	85	83	80	70	68	60.9	55.4	50.3				
14	79.2	77.2	77.2	70	69	66.5	59.2	53.8	49	43.2	39.4		
16	67	67	67	65	65	64	57.4	52.2	47.4	41.9	38		
18	58.3	58.2	58	57.2	56.6	55.9	54.8	50.4	44.7	40.6	36.8		
20	50.7	50.5	50.3	50.2	49.4	48.9	48.4	47.7	43.4	39.4	35.8		
22	44.6	44.5	44.4	44.1	43.8	43.3	42.7	42.1	41.5	38.1	34.5		
24	39.8	39.5	39.4	39.3	39.1	38.5	38	37.4	37	36.5	33.4		
26	35.7	35.6	35.4	35.2	34.8	34.5	34.2	33.6	33.2	32.6	32.1		
28	32.4	32.2	31.8	31.5	31.2	30.8	30.5	30.1	29.7	29.3	28.9		
30	29.5	29.2	28.8	28.4	28.1	27.8	27.3	27	26.7	26.3	25.9		
32	26.5	26.5	26.1	25.8	25.3	25	24.6	24.4	23.9	23.6	23.3		
34	24.5	24.2	23.8	23.5	23	22.7	22.4	21.9	21.6	21.3	21		
36	22.5	22.1	21.7	21.4	21.1	20.6	20.3	20	19.6	19.2	18.9		
38	20.5	20.3	20	19.5	19.2	18.9	18.5	18.1	17.8	17.4	17.1		
40	19	18.7	18.3	18	17.7	17.2	16.9	16.6	16.1	15.8	15.5		
42	17.6	17.2	16.9	16.6	16.1	15.8	15.5	15	14.7	14.4	14		
44	16.3	15.9	15.6	15.2	14.8	14.5	14.1	13.8	13.4	13.1	13		
46	15.1	14.8	14.4	14	13.7	13.3	12.9	12.6	12.4	12.2	12		
48		13.7	13.4	12.9	12.6	12.3	11.8	11.7	11.5	11.3	11		
50		12.7	12.4	11.9	11.6	11.3	11	10.9	10.7	10.5	10		
52			11.4	11.1	10.7	10.3	10.3	10.1	9.9	9.7	9.3		
54				10.2	9.9	9.5	9.1	9.4	9.2	8.9	8.5		
56					9.1	8.9	8.8	8.7	8.5	8.2	8.2		
58						8.4	8	8.3	8.1	7.9	7.6	7.3	
60							7.4	7.7	7.5	7.3	7	6.6	
62								7.2	7	6.8	6.5	6.2	
64									6.5	6.3	6	5.6	
66										5.7	5.8	5.5	5.1
68											5.2	5.1	4.4
70												4.7	4.5
72													3.8

Note: during crane operation with a gooseneck boom (auxiliary jib): the lifting capacity is equal to the lifting capacity of the main boom at the same radius, but must not exceed a maximum of 25 tons.

Table of Main Boom Lifting Performance (III) (S Boom) (with Light Duty Boom)

Unit of measurement: t

Radius (m)	Boom length (m)			
	86	89	92	95
16	30.9/16.3	28.1/16.9	25.3/17.4	
18	30	27.3	24.9	21
20	29.9	25.9	24	20.4
22	27.9	24.6	22.8	19.7
24	27	23.9	21.7	19
26	26.1	23	20.6	18
28	25.2	22	19.8	17
30	23.1	21	19.2	16
32	21.2	20.3	18.3	15.8
34	19.4	18.6	17.7	14.4
36	17.8	17.1	16.5	13
38	16.3	15.7	15.7	11.9
40	14.9	14.6	14.5	10.8
42	13.8	13.5	13.4	9.8
44	12.7	12.4	12.3	9
46	11.7	11.5	11.4	8.2
48	10.8	10.5	10.4	7.4
50	9.9	9.6	9.5	6.7
52	9.1	8.8	8.7	6
54	8.4	8.1	8	5.3
56	7.7	7.4	7.3	4.8
58	7.1	6.7	6.6	4.3
60	6.5	6.1	6	3.8
62	5.9	5.6	5.5	3.3
64	5.4	5.1	5	2.9
66	5	4.6	4.5	2.7
68	4.5	4	3.9	2.6
70	4.1	3.4	2.8	2.5
72	3.7	2.8	2.7	2.4
74	3.4	2.7	2.6	2.3
76		2.6	2.5	2.3
78		2.5	2.4	2.2
80			2.2	2.1
82				2

Lifting Characteristics of Fixed Jib (SF Boom)

Fixed Jib Lifting Height Curve

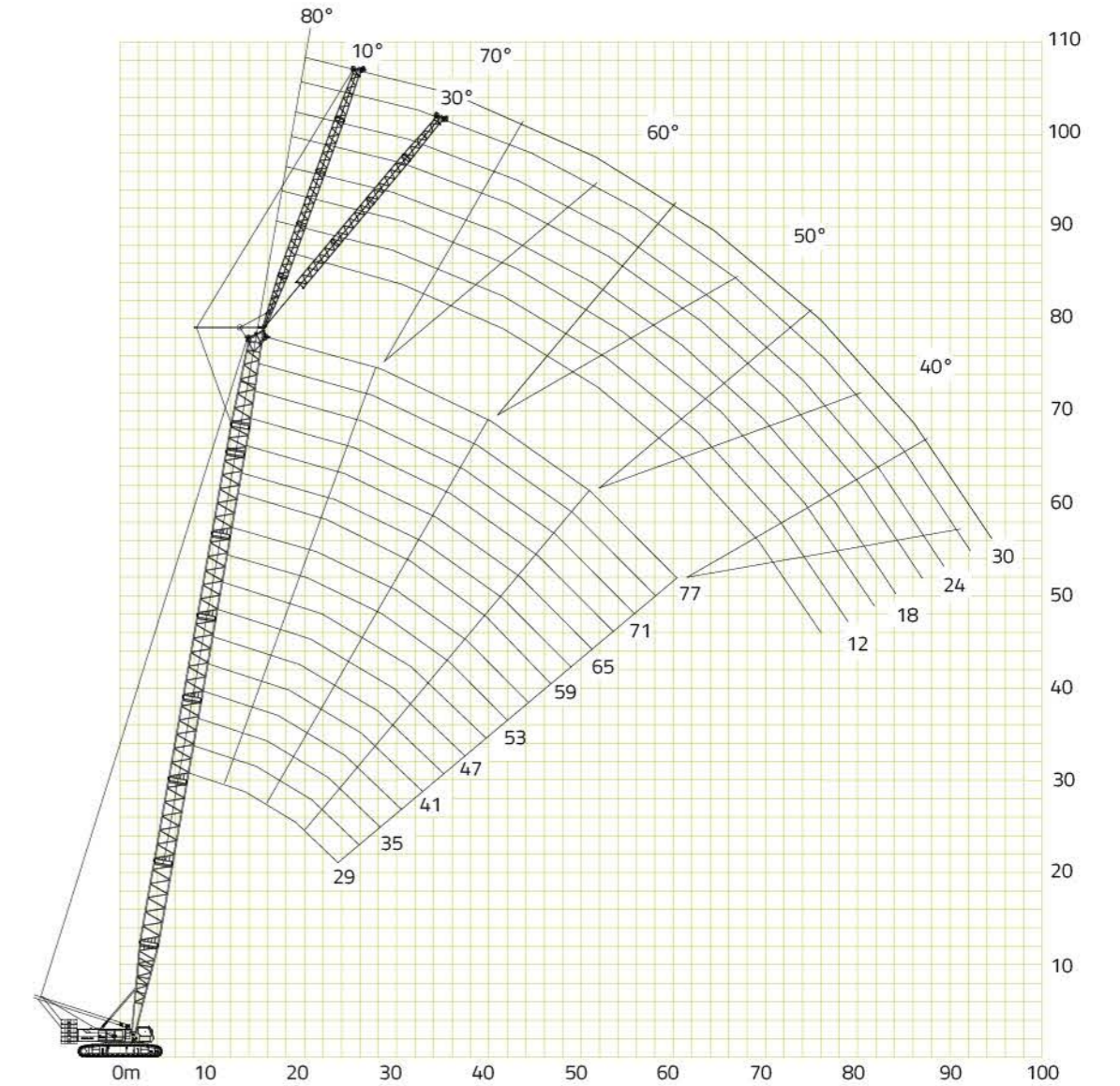


Table of Fixed Jib Lifting Performance (I) (SF Boom)

Unit of measurement: t

Length of main boom	29							
	12		18		24		30	
	Working angle of main boom (°)							
Radius (m)	10	30	10	30	10	30	10	30
10	34/10.5							
12	33.0							
14	32.5		27.0					
16	32.0	28.8	26.8		18.2			
18	31.3	26.8	25.7	20.5	18.1		13.0	
20	30.7	25.6	24.9	20.1	17.8		12.9	
22	30.0	24.5	24.2	19.1	17.3	14.1	12.6	
24	29.0	23.4	23.4	18.3	16.9	14.0	12.5	
26	28.0	22.4	22.8	17.5	16.6	13.9	12.3	10.0
28	27.0	21.6	22.1	16.8	16.2	13.6	12.0	9.9
30	25.5	20.9	21.2	16.2	15.9	13.0	11.7	9.8
32	24.0	20.2	20.7	15.6	15.5	12.5	11.5	9.6
34	22.6	19.6	20.0	15.0	15.2	12.0	11.2	9.4
36	21.7	19.2	18.9	14.6	14.9	11.6	10.9	9.2
38		18.8	18.0	14.1	14.7	11.1	10.6	9.0
40			17.1	13.6	14.1	10.8	10.4	8.7
42			16.1	13.2	13.8	10.5	10.2	8.4
44				12.9	13.5	10.1	10.0	8.2
46					13.0	9.8	9.8	8.0
48					12.2	9.6	9.5	7.8
50						9.0	9.4	7.5
52							9.2	7.4
54							9.1	7.2
56								7.2
58								

Table of Fixed Jib Lifting Performance (II) (SF Boom)

Unit of measurement: t

Length of main boom	38							
	12		18		24		30	
	Working angle of main boom (°)							
Radius (m)	10	30	10	30	10	30	10	30
14	32.5							
16	32.0	28.5	26.0					
18	31.3	28.1	24.9		17.8			
20	30.7	26.9	24.2	19.8	17.5		12.8	
22	30.0	25.9	23.5	19.5	17.1		12.5	
24	29.0	24.8	22.7	19.2	16.6	14.0	12.3	
26	28.0	23.9	22.2	18.4	16.3	13.9	12.0	
28	27.0	23.0	21.4	17.7	15.9	13.7	11.7	9.7
30	25.5	22.2	20.6	17.1	15.6	13.5	11.3	9.6
32	24.0	21.5	20.1	16.5	15.3	13.2	11.1	9.4
34	22.6	20.8	19.4	15.9	14.9	12.7	10.8	9.3
36	21.7	20.3	18.3	15.4	14.6	12.3	10.6	9.1
38	20.9	19.5	17.5	14.9	14.4	11.8	10.3	8.9
40	19.4	18.6	16.6	14.3	13.9	11.4	10.1	8.8
42	18.3	17.4	15.7	13.7	13.6	11.1	9.9	8.6
44	17.1	16.5	14.9	12.8	13.3	10.7	9.7	8.6
46		15.7	14.4	12.1	12.8	10.4	9.5	8.3
48			13.9	11.6	12.0	10.1	9.3	8.1
50			13.4	10.8	11.3	9.8	9.2	7.9
52				10.3	10.7	9.5	8.9	7.7
54					10.1	9.2	8.8	7.5
56					9.6	9.1	8.6	7.4
58						8.7	8.3	7.2
60							8.2	7.1
62							8.0	7.0
64								7.0
66								

Table of Fixed Jib Lifting Performance (III) (SF Boom)

Unit of measurement: t

Length of main boom	47							
	12		18		24		30	
	Working angle of main boom (°)							
Radius (m)	10	30	10	30	10	30	10	30
14	32.5							
16	32.0		25.2					
18	31.3	27.5	24.2		17.3			
20	30.7	27.1	23.5		17.0		12.4	
22	30.0	26.9	22.8	19.2	16.6		12.1	
24	29.0	26.0	22.0	18.9	16.2		11.9	
26	28.0	25.0	21.5	18.7	15.9	13.7	11.6	
28	27.0	24.2	20.8	18.3	15.5	13.5	11.3	
30	25.5	23.1	20.0	17.9	15.2	13.3	11.0	9.3
32	24.0	22.2	19.5	17.3	14.8	13.1	10.8	9.1
34	22.3	21.3	18.8	16.8	14.5	12.8	10.5	9.0
36	21.4	20.5	17.8	16.2	14.2	12.5	10.3	8.8
38	20.5	19.1	17.0	15.7	14.0	12.0	10.0	8.7
40	19.1	18.2	16.1	15.2	13.5	11.7	9.8	8.6
42	17.8	17.1	15.2	14.2	13.2	11.5	9.6	8.4
44	16.6	16.2	14.5	13.3	12.9	11.0	9.4	8.4
46	15.4	15.4	14.0	12.4	12.4	10.6	9.2	8.2
48	14.4	14.6	13.5	11.7	11.6	10.2	9.0	8.1
50	13.5	13.7	13.0	11.3	11.0	9.8	8.9	7.9
52	12.6	12.8	12.5	10.5	10.4	9.5	8.7	7.8
54		12.0	12.0	10.0	9.8	9.1	8.6	7.7
56			11.6	9.2	9.3	9.0	8.3	7.6
58			10.8	9.0	8.8	8.6	8.1	7.5
60				8.0	8.4	8.3	8.0	7.4
62					8.0	8.0	7.8	7.2
64					7.5	7.5	7.5	7.1
66						7.0	7.3	7.0
68							7.0	6.9
70							6.8	6.4
72								5.6
74								

Table of Fixed Jib Lifting Performance (IV) (SF Boom)

Unit of measurement: t

Length of main boom	56							
	12		18		24		30	
	Working angle of main boom (°)							
Radius (m)	10	30	10	30	10	30	10	30
16	32.0							
18	31.5		25.1					
20	30.9	27.0	24.2		16.8			
22	30.4	26.6	23.4		16.6		12.1	
24	28.3	26.5	22.7	18.9	16.4		12	
26	27.0	26.0	22.0	18.7	16.1		11.8	
28	26.3	23.5	21.4	18.6	15.8	13.5	11.5	
30	25.6	21.4	20.8	18.3	15.5	13.4	11.3	
32	24.8	19.5	20.2	18.1	15.2	13.2	11	9.2
34	23.5	18.6	19.7	17.8	15	13.1	10.8	9.1
36	21.6	18.1	19.2	17.1	14.7	12.9	10.5	8.9
38	19.9	17.6	18.7	15.8	14.4	12.8	10.3	8.8
40	18.4	17.2	17.9	14.7	14.2	12.6	10.2	8.6
42	17	16.8	17.0	13.7	13.5	12.4	9.9	8.6
44	15.8	16.2	16.2	12.7	12.6	12.1	9.7	8.4
46	14.7	15.1	15.1	12.5	11.8	11.9	9.5	8.3
48	13.7	14.0	14	12.1	11.1	11.4	9.3	8.3
50	12.7	13.0	13.1	11.9	10.4	10.8	9.2	8.1
52	11.9	12.1	12.2	11.6	9.8	10.2	9	8
54	11.1	11.3	11.4	11.4	9.2	9.6	8.9	7.8
56	10.4	10.6	10.7	11.1	9.0	9.0	8.7	7.7
58	9.7	9.9	10	10.4	8.8	8.6	8.4	7.7
60	9.1	9.2	9.4	9.7	8.6	8.0	8	7.5
62			8.8	9.1	8.5	7.6	7.5	7.4
64			8.3	8.5	8.3	7.3	7.1	7.4
66			7.7	7.9	8	7.2	6.8	7.1
68				7.5	7.1	6.5	6.5	6.7
70				7	7.0	6	6	6.4
72				6.6	6.5	5.5	5.5	6
74						5	5	5.6
76							4.4	5
78							3.6	4.4
80								

Table of Fixed Jib Lifting Performance (V) (SF Boom)

Unit of measurement: t

Length of main boom	71							
	12		18		24		30	
	Working angle of main boom (°)							
Radius (m)	10	30	10	30	10	30	10	30
18	32.0							
20	31.8		25.3					
22	30.4	27.0	24.5		17.7			
24	27.5	26.5	23.8		17.1			
26	27.0	25.3	23.2	18.9	16.7		12.1	
28	26.3	22.9	22.5	18.7	16.1		12	
30	25.8	21.1	21.8	18.6	15.6	13.5	11.7	
32	24.5	20.5	21.0	18.5	15.3	13.4	11.5	
34	22.3	19.9	19.8	17.9	15.5	13.3	11.3	9.2
36	20.4	19.4	19.2	16.5	16.2	13.2	11.1	9.1
38	18.7	19.0	18.8	15.2	16.5	13.1	10.8	9
40	17.2	17.8	17.6	14.4	16.2	12.9	10.7	8.9
42	15.8	16.4	16.2	14.0	16	12.9	10.5	8.8
44	14.6	15.1	15	13.7	15.3	12.6	10.3	8.6
46	13.4	14.0	13.8	13.4	14.2	11.7	10.1	8.6
48	12.4	12.9	12.8	13.1	13.1	10.9	9.9	8.5
50	11.5	11.9	11.9	12.6	12.2	10.2	9.8	8.4
52	10.6	11.0	11	11.7	11.3	9.5	9.2	8.3
54	9.8	10.2	10.2	10.8	10.5	8.9	8.6	8.3
56	9.1	9.5	9.5	10.0	9.8	8.4	8.1	8.1
58	8.4	8.8	8.8	9.3	9.1	7.9	7.7	8
60	7.8	8.1	8.2	8.6	8.4	7.7	7.2	7.7
62	7.2	7.5	7.6	8.0	7.8	7.6	6.8	7.3
64	6.7	6.9	7	7.4	7.2	7.6	6.4	6.8
66	6.1	6.4	6.4	6.8	6.6	7.4	6	6.5
68	5.6	5.8	5.8	6.2	6	7.3	5.6	6.1
70	5	5.2	5.3	5.6	5.5	6.7	5.3	5.7
72	4.6	4.7	4.8	5.1	5	6.2	5	5.4
74	4.3	4.3	4.4	4.6	4.6	5.8	4.7	5.1
76			4.1	4.3	4.3	5.3	4.4	4.8
78			3.9	4.0	4	4.9	4.1	4.4
80				3.7	3.8	4.4	3.8	4.2
82					3.5	4.1	3.6	3.9
84						3.7	3.3	3.7
86						3.4		3.5
88								3.2
90								

Table of Fixed Jib Lifting Performance (VI) (SF Boom)

Unit of measurement: t

Length of main boom	77							
	12		18		24		30	
	Working angle of main boom (°)							
Radius (m)	10	30	10	30	10	30	10	30
20	32.0							
22	31.8		25.0					
24	30.4	22.7	24.2		14.3			
26	27.5	22.4	23.6		13.9		8.3	
28	27.0	22.1	23.0	16.2	13.6		8.0	
30	26.0	21.6	22.4	16.1	13.3		7.8	
32	23.9	21.0	22.0	15.8	13.0	9.5	7.5	
34	21.8	20.4	21.5	15.7	12.7	9.4	7.4	
36	19.9	19.9	20.4	15.5	12.4	9.2	7.1	6.9
38	18.2	19.4	18.6	15.2	12.1	9.0	6.7	6.8
40	16.7	17.9	17.1	14.8	11.9	8.9	6.5	6.7
42	15.3	16.3	15.7	14.4	11.6	8.8	6.4	6.7
44	14.1	15.0	14.5	14.0	11.4	8.6	6.1	6.5
46	12.9	13.8	13.3	13.8	11.2	8.5	6.0	6.5
48	11.9	12.6	12.3	13.4	10.9	8.4	5.9	6.4
50	11	11.6	11.4	12.2	10.7	8.3	5.8	6.3
52	10.1	10.7	10.5	11.2	10.4	8.2	5.5	6.3
54	9.3	9.8	9.7	10.4	10	8.0	5.4	6.2
56	8.6	9.0	9	9.6	9.2	8.0	5.3	6.1
58	7.9	8.3	8.3	8.9	8.4	7.9	5.2	6.1
60	7.3	7.6	7.6	8.1	7.7	7.8	5.0	6.1
62	6.7	7.0	6.9	7.5	7.1	7.7	4.9	5.6
64	6	6.4	6.3	6.8	6.5	7.7	4.8	5.1
66	5.5	5.8	5.7	6.2	5.9	7.3	4.7	4.7
68	4.9	5.2	5.1	5.6	5.3	6.8	4.6	4.3
70	4.5	4.7	4.6	5.0	4.8	6.2	4.6	3.9
72	4.2	4.2	4.3	4.6	4.4	5.8	4.4	3.5
74	3.9	3.8	4	4.3	4.2	5.3	4.3	3.4
76	3.6	3.4	3.7	4.0	3.9	4.8	4.2	3.4
78	3.3	3.0	3.4	3.7	3.6	4.4	4.2	3.4
80		2.6	3.0	3.2	3.4	4.0	4.0	3.2
82			2.6	2.9	3.1	3.6	3.6	3.2
84			2.3	2.5	2.8	3.2	3.2	3.2
86				2.2	2.5	2.9	3.0	3.2
88					2.2	2.5	2.6	3.1
90					2.0	2.2	2.4	2.8
94						1.9	2.0	2.4
96								2.0

Lifting Characteristics of Main Boom + Luffing Jib (SW Boom)

Main Boom +Luffing Jib Lifting Height Characteristics Curve

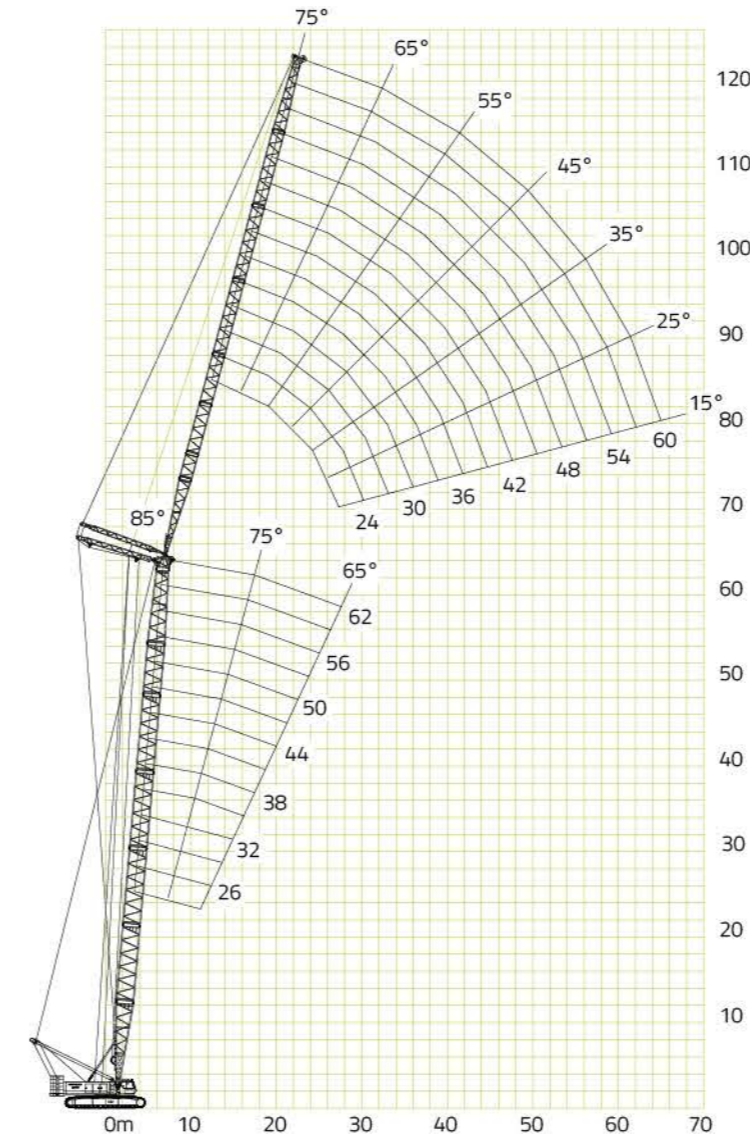


Table of Luffing Jib Lifting Performance (SW Boom)

Unit of measurement: t

S-boom length (m)	29																	
	27			33			39			45			51			60		
	Working angle of main boom (°)																	
S-boom angle	85°	75°	65°	85°	75°	65°	85°	75°	65°	85°	75°	65°	85°	75°	65°	85°	75°	65°
Radius (m)																		
14	68.1			57.3														
16	62.5			54			41.9											
18	57.2			50.3			40.8			31.2								
20	53.3			47			39.7			29.8			22.3					
22	48.8			43.9			38.3			29.1			21.7			12		
24	44.1	42.1		40.9			37			28.6			21.1			11.4		
26	40	38.4		37.9	38		35.4			27.5			20.5			11		
28	33.1	35.1		34.3	34.9		33.6	32.5		26.9			20.1			10.7		
30	25.6	32.3		31.4	32.1		30.8	32		26.3			19.6			10.3		
32		29.9	27.3	28.9	29.8		27.2	29.6		24.8	27		19.1	16.7		10		
34		27.9	25.3	25.6	27.7		25.1	26.9		22.8	26.4		18.6	16.5		9.7		
36		26	23.6	20.6	25.9	23	23.3	24.9	19.6	21.1	24.5		18.3	16.3		9.4		
38			22.1	24.3	21.5	21.7	23.3	19.5	19.6	22.8	17.2	15.8	17.2	15.8		9.1	9.8	
40			20.7	22.9	20.2	20	21.8	18.4	18.5	21.3	16	15.4	18.3	16.3		8.9	9.4	
42						18.9	16.3	20.4	17.2	17.4	20	17	15	15		8.6	9.2	
44						17.7	19.3	16.3	16.5	18.7	16.7	14.1	14.7	14.7		8.4	8.9	
46						16.8	18.2	15.3	15.9	17.7	15.8	12.1	14.2	14.5	8.1	8.6		
48							14.5	13.1	16.7	14.8	11.3	12.8	14.3	7.7	8.4			
50									15.7	14	10.8	12.3	13.4	7.4	8.2	8.6		
52									15	13.2	10.2	11.7	12.7	6.9	7.9	8.4		
54										12.5	10	11.1	12.1	6.6	7.6	8.2		
56										11.9	10.6	11.3	6.3	7.1	7.9			
58										11.3	10.1	10.8	6.1	6.8	7.6			
60												10.3	5.7	6.5	7.2			
62													9.8	5.5	6.2	6.8		
64														9.2	5.9	6.5		
66															5.6	6		
68																6		
70																	5.6	

Unit of measurement: t

S-boom length (m)	41																	
W-jib length (m)	27			33			39			45			51			60		
S-boom angle	85°	75°	65°	85°	75°	65°	85°	75°	65°	85°	75°	65°	85°	75°	65°	85°	75°	65°
Radius (m)																		
12																		
14																		
16	62.5			55.6			41.4											
18	55.6			52.2			40.3			31.7								
20	50			48.7			39			30.8			22.6					
22	45.6			45			37.7			29.4			22					
24	41.6	32.5		40.9			36.4			28.9			21.4			11.7		
26	38.1	32.2		37.5	29.2		34.1			27.8			20.8			11.2		
28	35.3	29.7		34.7	29		31.6			27.2			20.3			10.9		
30	30.9	27.4		32.2	27.8		29.5	26.3		26.6			19.8			10.6		
32		25.5		30	25		26.3	24.5		26			19.3			10.2		
34		23.7	20.2	27	23.2		24.4	22.7		23.7	23.1		18.9			9.8		
36		22.3	20	24.4	21.7		22.7	21.2		22	22.2		18.5	19.5		9.5		
38			18.7	20.4	18.2	21.2	19.8			20.4	20.7		17.9	19.3		9.2		
40			17.6	19.1	18	19.6	18.7			19	19.3		16.6	18.8		9	9.5	
42			16.6	18.1	17	17.5				18	18.2		15.5	17.6		8.8	9.3	
44					16.1	16.6	14.8	17	17.1				14.5	16.6		8.6	9	
46					15.1	15.6	14.6	16.1	16.1				12.5	15.6		8.4	8.8	
48					14.3	14.8	13.8	15.4	15.2	13.2	11.7	14.7				7.9	8.5	
50					13.5		13	14.4	12.5	11.1	13.9	11.5	7.6	8.3				
52							12.4	13.7	11.9	10.5	13.1	11.3	7.2	8.1				
54							11.8	12.9	11.2	10	12.5	10.7	6.8	7.9				
56							11.1		10.6	11.8	10.1	6.5	7.6	8.2				
58									10.1	11.2	9.6	6.2	7.1	8.1				
60									9.6	10.6	9.1	5.9	6.8	7.8				
62									9.1		8.6	5.6	6.5	7.4				
64										8.2		6.2	7					
66										7.8		5.9	6.7					
68										7.5		5.7	6.3					
70												5.5	6					
72													5.7					
74													5.4					
76													5.4					

Unit of measurement: t

S-boom length (m)	47																	
W-jib length (m)	27			33			39			45			51			60		
S-boom angle	85°	75°	65°	85°	75°	65°	85°	75°	65°	85°	75°	65°	85°	75°	65°	85°	75°	65°
Radius (m)																		
14	58.8																	
16	52.5			51.3														
18	46.9			46.1			41.6											
20	42.8			41.9			40.5			30								
22	39.1			38.1			39.4			29.5			22.2					
24	35.9			35			37.5			29.1			21.6			11.5		
26	33.1			32.5			34.4			28.4			21			11.3		
28	30.6	28.7		30.3			31.9			27.3			20.4			10.9		
30		26.7		28.4	25.8		30			26.8			19.9			10.7		
32		24.7		26.6	24.2		27.8	23.6		26.2			19.5			10.3		
34		23		25	22.5		25.9	23.4		24.3			19			9.9		
36		21.5		21	24.4	21.9		22.7	21.2				18.6			9.6		
38		20.2		19.7	22.8	20.5		21.1	19.8				18.2	19.2		9.2		
40			16.6	18.5	21.4	19.2		19.7	18.7				16.9	18.1		9		
42			15.6	17.4	15	20	18.1		18.5	17.5			15.8	17		8.8	9.6	
44			14.7	17.2	14.2		16.9		17.4	16.5			14.7	16		8.6	9.2	
46			13.6	17	13.4		16	13	16.4	15.5			13.8	15		8.4	8.9	
48			12.9		12.7		15.1	12.8	15.6	14.6			12	14.2		8	8.7	
50					12.1		14.3	12.2		13.9			11.2	13.3		7.7	8.5	
52					11.7		14.1	11.6		13.1	10.9	10.7	12.6	10.9		7.3	8.3	
54					11			10.9		12.4	10.4	10.1	12	10.4		6.9	8.1	
56								10.4		11.8	9.9		11.3	9.9		6.6	7.9	
58								9.9		11.4	9.3		10.7	8.8		6.3	7.5	8
60										8.8			10.2	8.3		5.9	7	7.1
62										8.4			9.7	7.9		5.7	6.7	6.7
64										8			7.5	5.5		6.4	6.4	
66										7.8			7.1			6.1	6	
68													6.7			5.8	5.7	
70													6.4			5.6	5.4	
72																5.2	5	
74																	4.8	
76																	4.5	
78																	4.4	

Unit of measurement: t

S-boom length (m)	53																	
W-jib length (m)	27			33			39			45			51			60		
S-boom angle	85°	75°	65°	85°	75°	65°	85°	75°	65°	85°	75°	65°	85°	75°	65°	85°	75°	65°
Radius (m)																		
14																		
16	55																	
18	49.1			48.1			41.9											
20	44.4			43.4			40.8			31.3								
22	40.3			39.4			38.8			29.8			22.1					
24	36.9			35.9			35.3			29.2			21.7			12		
26	33.8			33.1			32.5			28.6			21.1			11.4		
28	31.3			30.6			30.3			27.5			20.6			11		
30	29.4	27.8		28.8			28.1			26.9			20.1			10.7		
32	27.2	25.9		26.6	25.1		26.3			25.6			19.6			10.3		
34		24.3		25	23.4		24.4	21.6		23.9			19.1			10		
36		22.7		23.4	22		22.8	21.2		22.5	20.5		18.7			9.7		
38		21.2		22	20.7		21.6	19.9		20.9	19.3		18.3			9.4		
40		19.9		19.4	20.3	18.8		19.8	18.1		17.3	17.3				9.1		
42		19.4	15.4	18.2	19.2	17.7		18.8	17		16.1	16.4				8.9		
44			14.6	17.1	18.1	16.6		17.8	16.1		15	15.4				8.7	9.7	
46			13.8	16.2	13.1		15.6	16.9	15.4		14.1	14.6				8.5	9.3	
48			13	16	12.4		14.8	13.2	15.9	14.2		12.2	13.8			8.1	9.1	
50			12.3		11.8		14	11.2		13.5		11.3	12.9			7.7	8.9	
52					11.1		13.3	10.6		12.7	10	10.8	12.3			7.4	8.7	
54					10.6		10			12.1	9.5	10.2	11.6			6.9	8.3	
56					10.1		9.5			11.4	8.9		11	8.6		6.6	8.1	
58					9		10.9			8.5		10.4	8	6.3		7.9		
60					8.6					8.1		10	7.5	6.1		7.5		
62										7.7		9.4	7.1	5.7		7.2	6	
64										7.2		9	6.7	5.5		6.7	5.6	
66										6.9		6.4		6.4		5.3		
68										6.5		6		6.1		4.9		
70												5.7		5.9		4.6		
72												5.5		5.7		4.4		
74																4.1		
76																3.9		
78																3.7		
80																3.5		

Unit of measurement: t

S-boom length (m)

Unit of measurement: t

S-boom length (m)	62																	
W-jib length (m)	27			33			39			45			51			60		
S-boom angle	85°	75°	65°	85°	75°	65°	85°	75°	65°	85°	75°	65°	85°	75°	65°	85°	75°	65°
Radius (m)																		
14																		
16	50.6																	
18	45	44.4																
20	40.6	39.7	38.8															
22	36.9	36	35.3	30.7	22.6													
24	33.8	32.8	32.2	29.4	21.9	14.8												
26	30.9	30.2	30	28.2	21.3	13.2												
28	28.8	28.1	27.5	26.5	20.7	12.7												
30	26.9	26.3	25.6	25	20.2	12.4												
32	25	26.8	24.4	23.8	23.4	19.8	12											
34		25	22.8	24.4	22.2	21.9	19.3	11.7										
36		23.1	21.4	22.5	20.9	22.2	20.3	18.8	11.3									
38		21.6	20.2	21.1	19.7	20.6	19.1	20.3	18.4	11								
40		20.3		20	18.4	19.5	17.9	19.2	17.5	10.7								
42		19.4		19.1	17.5	18.2	17	18.1	16.6	17.5	10.5							
44		18.4		18.1	16.6	17.1	16	16.9	15.6	16.4	10.3							
46			14.7	17.2		16	15.2	16	14.8	15.6	10	11.4						
48			14.3	16.3	13.2	15.2	14.6	15.3	13.9	15	9.6	11						
50			13.4	15.5	12.6	14.6	14.1	14.5	11.7	14.4	9.1	10.8						
52			12.8		12.1	14.2	11.5	13.8	11.1	13.8	8.6	10.5						
54			12.2		11.5	13.8	10.9	13.2	10.5	13.1	8.1	10.3						
56			11.8		10.9	13.1	10.3	12.6	10.3	10	12.5	7.7	10					
58					10.3		9.8	12.2	9.7	11.9	7.2	9.8						
60					9.8		9.5	11.9	9.4	11.3	6.8	9.4						
62							8.9		8.8	10.6	8.4	6.2	8.8					
64							8.6		8.4	10.3	7.8	6.2	8.4	6.9				
66									8.1	10	7.5	7.9	6.6					
68									7.8		7.2	7.5	6.3					
70									7.2		6.6	7.1	6					
72									6.9		6.3	6.7	5.7					
74											5.9	6.3	5.5					
76											5.8	6	5.2					
78											5.6		4.9					
80											5.3		4.6					
82													4.5					
84														4.3				

Lifting Characteristics of Main Boom + Heavy Fixed Jib (SFV Boom)

Heavy Fixed Lifting Height Curve

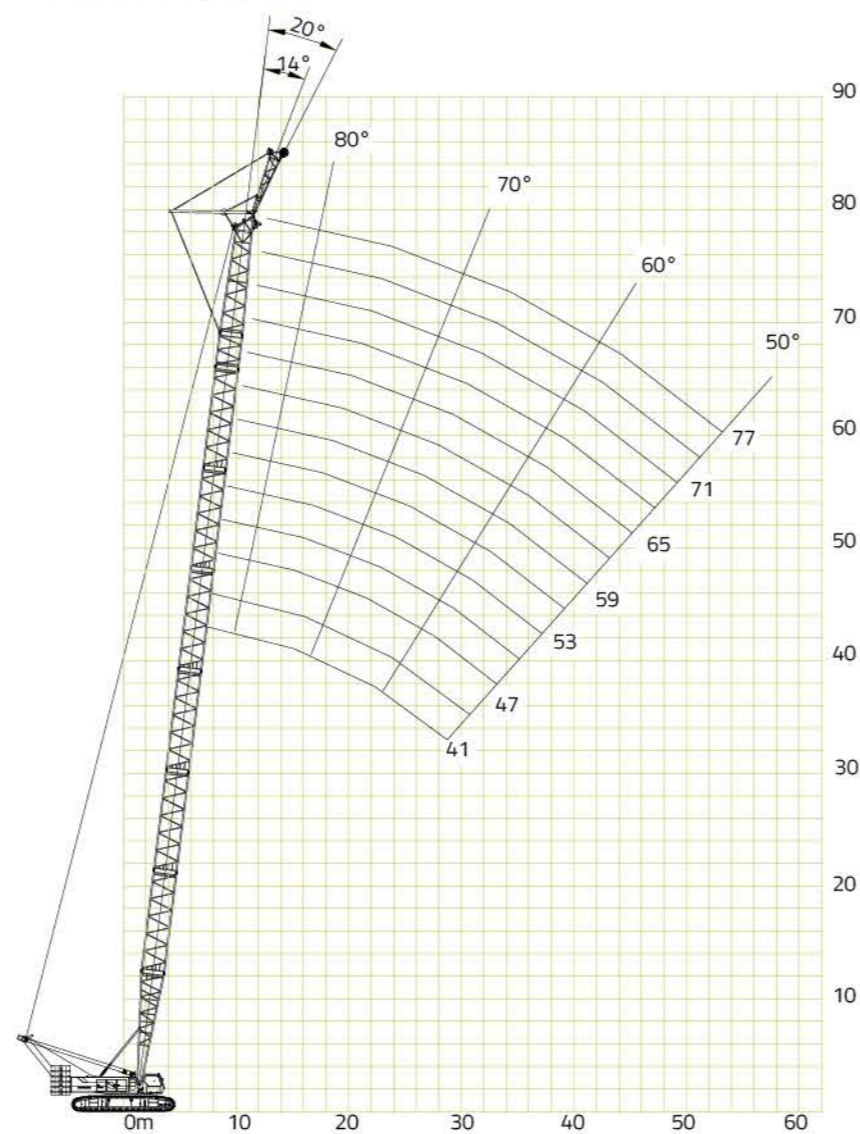


Table of Heavy Fixed Jib Lifting Performance (I) (SFV Boom)

Unit of measurement: t

Radius (m)	Length of main boom (m)							
	41		44		47		50	
	Jib set angle (°)							
	14	20	14	20	14	20	14	20
10	60.0	56.9	60.0	56.9/11	60.0/11	56.9/11		
12	60.0	54.7	60.0	54.7	60.0	54.7	60.0/11	
14	60.0	50.3	60.0	52.5	60.0	52.5	60	56.9
16	58	48.1	59.1	48.1	60.0	50.3	60	52.5
18	54.7	45.9	56.9	45.9	56.9	48.1	60	50.3
20	51.4	43.8	52.4	43.8	51.9	45.9	58	48.1
22	47.2	41.6	46.7	42.7	46.1	43.8	51.2	45.9
24	42	39.4	41.9	41.6	41.5	41.6	45.6	43.8
26	37.8	37.8	37.7	37.7	37.4	37.5	40.9	41.1
28	34.1	34.2	34.1	34.1	33.8	34	37	37.1
30	31.1	31.1	31	31.1	30.8	30.8	33.6	33.7
32	28.5	28.5	28.4	28.4	28.1	28.2	30.6	30.6
34	27.3/33	27.3/33	26	26	25.8	25.9	27.8	28
36			25/35	25/35	23.9	23.9	25.5	25.6
38					22.9/37	22.9/37	23.6	23.6
40							21.7/39	21.8/39
42								

Notes:

- The unit of measurement for the lifting capacity is t, and “*/*” signifies “lifting capacity/radius”. Among these, value in grey colored cells are determined by the strength of the strength of the boom, and values in white colored cells are determined by overall stability.
- The working angle of the main boom is between 50–80°, the angle of the heavy fixed jib is 14° and 20°; the heavy fixed jib is 6m long.

Table of Heavy Fixed Jib Lifting Performance (II) (SFV Boom)

Unit of measurement: t

Radius (m)	Length of main boom (m)							
	53		56		59		62	
	Jib set angle (°)							
	14	20	14	20	14	20	14	20
11	60.0							
12	60.0	56.9	60.0	56.9	60.0	56.9/13	60.0	56.9/13
14	60.0	54.7	60.0	54.7	60.0	54.7	60.0	55.8
16	60.0	51.4	60.0	52.5	59.1	52.5	56.9	52.5
18	57.4	49.2	56.9	50.3	55.8	50.3	53.6	50.3
20	51.2	47	50.3	48.1	49.2	48.1	48.1	49.2
22	45.6	44.8	44.8	44.8	43.8	43.8	43.2	43.8
24	40.9	41.1	40.4	40.5	39.9	40	39.4	39.4
26	37	37.1	36.6	36.7	36	36.1	35	35.5
28	33.4	33.4	33.2	33.3	32.7	32.8	31.7	32.3
30	30.3	30.4	30.1	30.1	29.5	29.9	29.5	29.5
32	27.7	27.7	27.4	27.5	27.1	27.3	27	27
34	25.4	25.4	25.1	25.2	24.8	25	24.7	24.7
36	23.3	23.4	23.2	23.2	22.8	22.9	22.6	22.6
38	21.5	21.5	21.3	21.4	21	21.1	20.8	20.8
40	19.9	19.9	19.8	19.8	19.5	19.5	19.2	19.2
42	19.2/41	19.2/41	18.3	18.3	18	18	17.7	17.8
44			17.6/43	17.6/43	16.6	16.7	16.5	16.5
46					16.1/45	16.1/45	15.2	15.2
48							14.7/47	14.7/47
50								

Table of Heavy Fixed Jib Lifting Performance(III) (SFV Boom)

Unit of measurement: t

Radius (m)	Length of main boom (m)									
	65		68		71		74		77	
	Jib set angle (°)									
	14	20	14	20	14	20	14	20	14	20
13	55.2	54.1	49.2		44.6					
14	55	53.9	48.7	47.9	42.4	41.6	38	37.2	33.6	32.5/15
16	53.9	53	47.6	46.8	41.6	41	37.1	36.5	32.9	32.4
18	50.9	50.3	46.8	45.9	40.5	39.9	36.4	35.8	32.3	31.7
20	48.1	47.6	45.7	45.1	39.6	39.1	35.3	35	31.3	30.9
22	42.7	42.7	41.6	42.7	38.8	38.3	34.3	33.9	30.6	30.2
24	38.3	38.3	37.2	37.7	37.2	37.2	33.5	33.1	29.7	29.4
26	35	35	33.9	33.9	33.4	33.4	32.7	32.4	28.7	28.4
28	31.7	31.7	30.6	30.6	30.1	30.1	29.5	29.5	26.9	26.7
30	28.4	28.4	28.2	28.2	27.9	27.9	27.3	27.3	26.3	26
32	26.3	26.8	25.7	26.3	25.2	25.2	24.6	24.6	24.1	24.1
34	24.1	24.5	23.5	23.5	23	23	22.4	22.4	21.9	21.9
36	22.4	22.4	21.9	21.9	21.3	21.3	20.8	20.8	19.7	20.2
38	20.6	20.7	19.7	19.7	19.1	19.7	18.6	19.1	18	18.6
40	18.9	19.1	18	18.6	18	18	17.5	17.5	17	17
42	17.5	17.5	17	17	16.4	16.4	15.9	15.9	15.3	15.3
44	16.2	16.2	15.3	15.6	15.3	15.3	14.8	14.8	14.2	14.2
46	15	15	14.2	14.2	13.7	13.9	13.4	13.7	13.1	13.1
48	13.9	13.9	13.4	13.4	13.1	13.1	12.6	12.6	12	12
50		13.4/49	12.6	12.6	12	12	11.5	11.5	10.9	10.9
52				12/51	11.2	11.2	10.7	10.9	10.4	10.4
54						10.9/53	9.8	9.8	9.3	9.3
56								9.3/55	8.5	8.5
58										

Table of Lifting Performance during Crane Operations with Heavy Fixed Jib-Shield Machine Operation

Table of Lifting Capacity during Crane Operations including Main Boom with Heavy Fixed Jib Attached

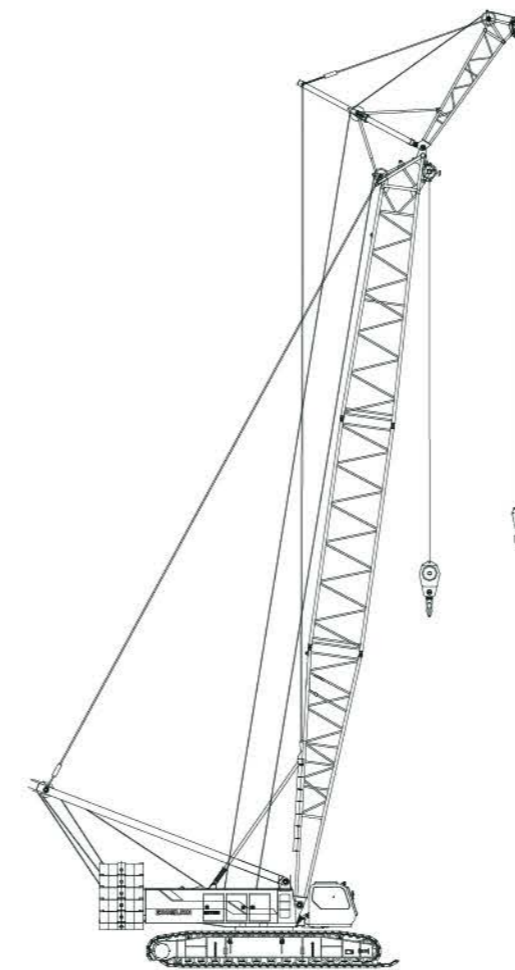


Table of Lifting Capacity

Unit of measurement: t

Main hook radius (m)	Length of main boom (m)			
	20	23	26	29
6	221	194.8	187.1	178
7	184.7	184.5	183	168
8	169	160.6	158.5	156.5
9	128.6	128.5	128.5	128.3
10	126	124	122	119.9
12	96.9	96.7	96.5	96.2
14	77	77	76.8	76.6
16	63.1	63	62.8	62.7
18	53.1	53	52.9	52.7
20		45.5	45.4	45.4
22			39.6	39.6
24			34.7	34.7
26				30.6

The length of the main boom with heavy fixed jib (6m) ranges from 20m~29m, where the jib set angle is 25°; the load is lifted on the load hook of the main boom, and no load is lifted on the load hook of the fixed jib.

Table of Lifting Capacity during Crane Operations with Heavy Fixed Jib

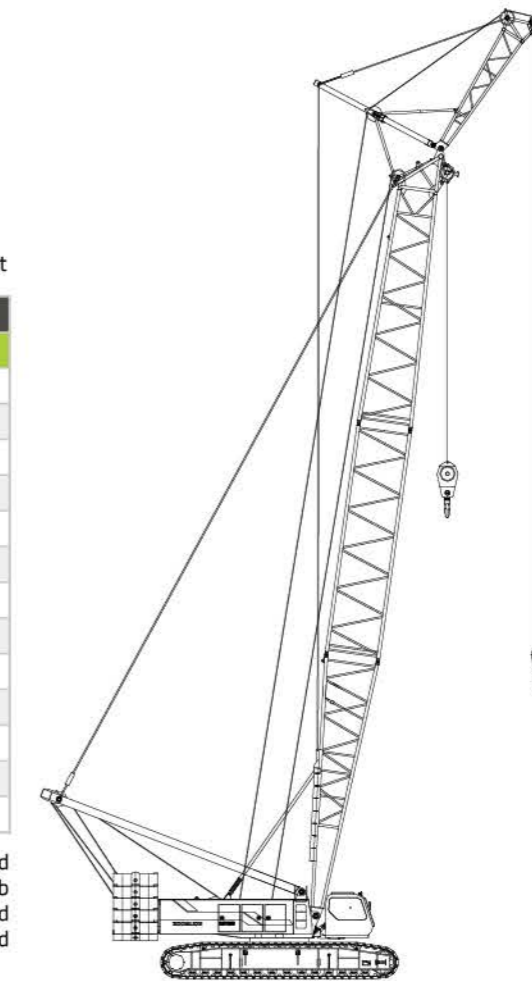


Table of Lifting Capacity

Unit of measurement: t

Auxiliary hook radius (m)	Length of main boom (m)			
	20	23	26	29
8	70			
9	68.9	70	70	70
10	65.6	70	70	70
12	61.3	68.9	70	70
14	56.9	65.6	66.7	67.8
16	53.6	61.3	63.4	64.5
18	50.3	58	59.3	59.1
20	48.1	51.6	51.6	51.5
22	45.6	45.6	45.6	45.5
24	40.7	40.7	40.7	40.5
26	38.5/25	36.6	36.6	36.6
28		34.8/27	33.2	33.2
30			30.3	30.1
32				27.7

The length of the main boom with 260t load hook ranges between 20m~29m, and the weight of the load hook is 4.2t; no load is lifted on the load hook of the main boom, and a load is lifted on the load hook of the auxiliary hook.

Table of Lifting Capacity during Crane Operations especially Tailored for Turnover of Shield Machine

Table of Lifting Capacity

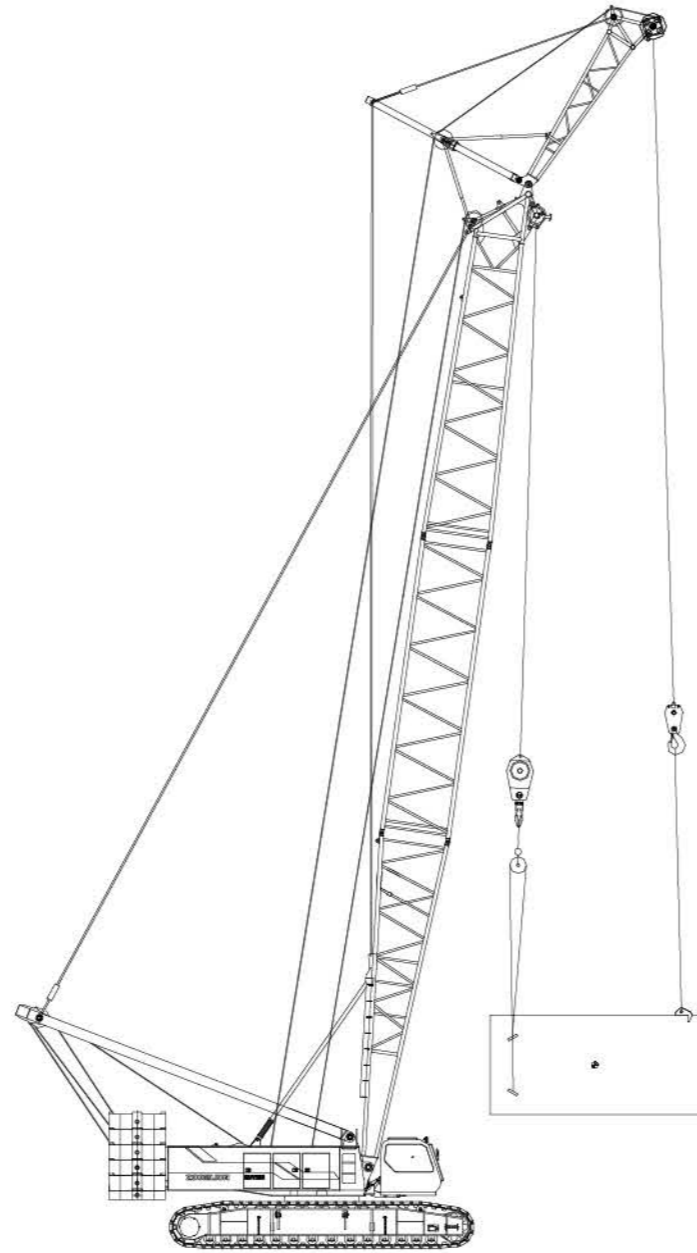
Unit of measurement: t

Length of main boom 29m					
Main boom angle	Main hook radius (m)	Auxiliary hook radius (m)	Main hook load	Auxiliary hook load	Total load of main hook + auxiliary hook
82°	6.5	10	166	70	138
80°	7.5	11.2	150	70	125

Length of main boom 26m					
Main boom angle	Main hook radius (m)	Auxiliary hook radius (m)	Main hook load	Auxiliary hook load	Total load of main hook + auxiliary hook
81°	6.5	10	175	70	138
78.7°	7.5	11.3	151	70	125

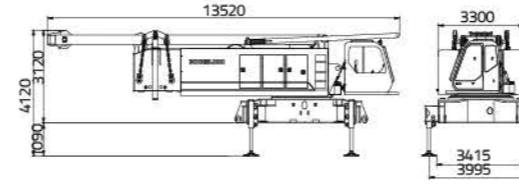
Length of main boom 23m					
Main boom angle	Main hook radius (m)	Auxiliary hook radius (m)	Main hook load	Auxiliary hook load	Total load of main hook + auxiliary hook
79.7°	6.5	10.3	184	69	138
77.2°	7.5	11.5	155	68	125

Length of main boom 20m					
Main boom angle	Main hook radius (m)	Auxiliary hook radius (m)	Main hook load	Auxiliary hook load	Total load of main hook + auxiliary hook
78.2°	6.5	10.6	200	63	126
75.2°	7.5	11.7	175	61	122

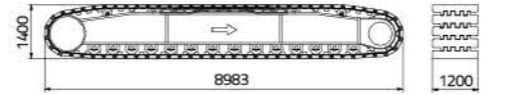


With main and auxiliary hooks lifting the load simultaneously

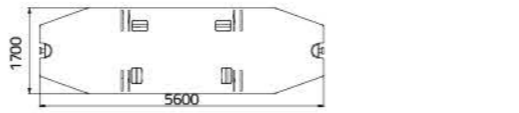
Transport Dimensions and Weight of Main Components



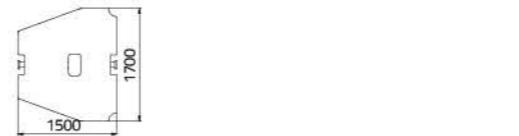
Name	Basic machine
Weight (t)	48



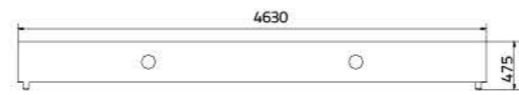
Name	Crawler carrier
Weight (t)	24.5 × 2



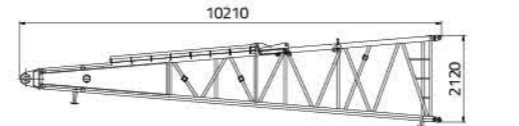
Name	Counterweight base plate
Weight (t)	18.98t × 1 (thickness 260)



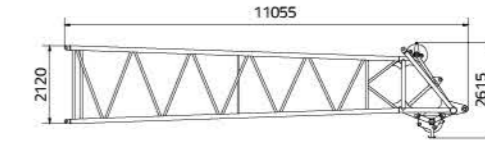
Name	Counterweight block
Weight (t)	6.6t × 10 (thickness 450)



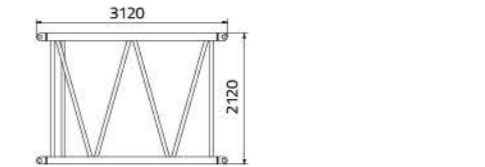
Name	Central counterweight plate
Weight (t)	16t × 2



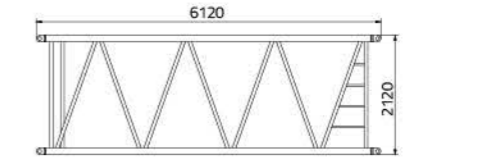
Name	Bottom section of main boom
Weight (t)	3.02t × 1 (width 2365)



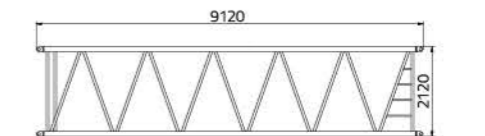
Name	Top section of main boom
Weight (t)	3.38t × 1 (width 2320)



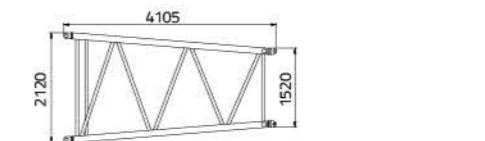
Name	3M main boom intermediate section
Weight (t)	0.72t × 1 (width 2320)



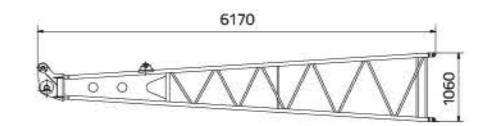
Name	6M main boom intermediate section
Weight (t)	1.2t × 1 (width 2320)



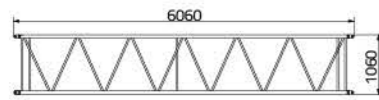
Name	9M main boom intermediate section
Weight (t)	1.78t × 6 (width 2320)



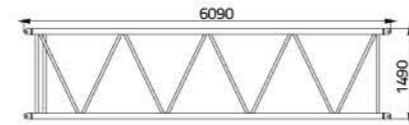
Name	4M main boom transition section
Weight (t)	0.82t × 1 (width 2320)



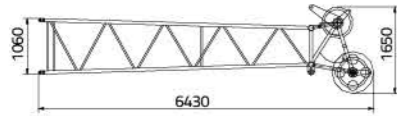
Name	Bottom section of fixed jib
Weight (t)	0.47t × 1 (width 2320)



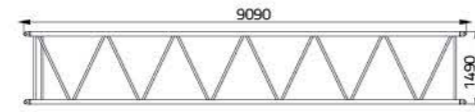
Name	6M fixed jib intermediate section
Weight (t)	0.5t × 3 (width 1270)



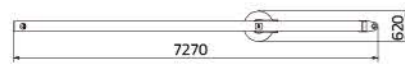
Name	6M luffing jib intermediate section
Weight (t)	0.59t × 2 (width 1690)



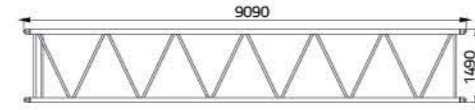
Name	Top section of fixed jib
Weight (t)	0.64t × 1 (width 1270)



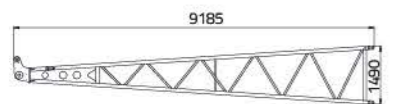
Name	9M luffing jib intermediate section (A)
Weight (t)	0.82t × 1 (width 1690)



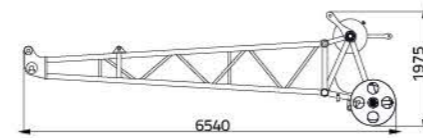
Name	Bracing pole of fixed jib
Weight (t)	0.75t × 1 (width 1500)



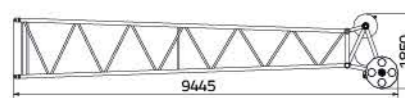
Name	9M luffing jib intermediate section (B)
Weight (t)	0.68t × 2 (width 1690)



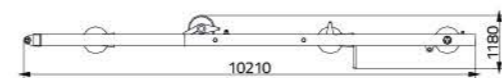
Name	Bottom section of luffing jib
Weight (t)	10.5t × 1 (width 1690)



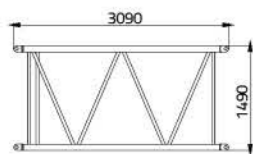
Name	Heavy fixed jib
Weight (t)	1.0t × 1 (width 1565)



Name	Top section of luffing jib
Weight (t)	1.1t × 1 (width 1690)



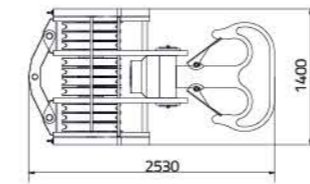
Name	Rear bracing pole of luffing jib
Weight (t)	1.74t × 1 (width 1750)



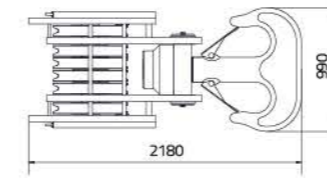
Name	3M luffing jib intermediate section
Weight (t)	0.32t × 1 (width 1690)



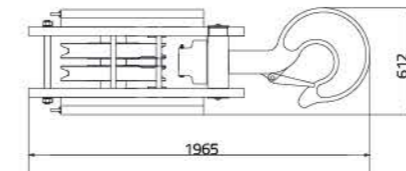
Name	Front bracing pole of luffing jib
Weight (t)	1.52t × 1 (width 1385)



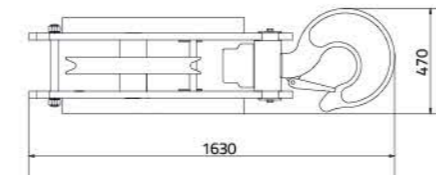
Name	Main hook (260t load hook)
Weight (t)	4.2t × 1



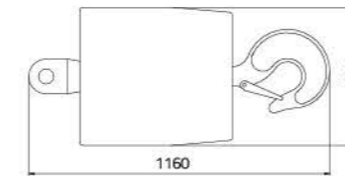
Name	160t/100t load hook
Weight (t)	2.8t × 1



Name	50t load hook
Weight (t)	1.7t × 1



Name	30t load hook
Weight (t)	1.07t × 1



Name	16t load hook
Weight (t)	0.8t × 1